

Windows 8 Driver installation



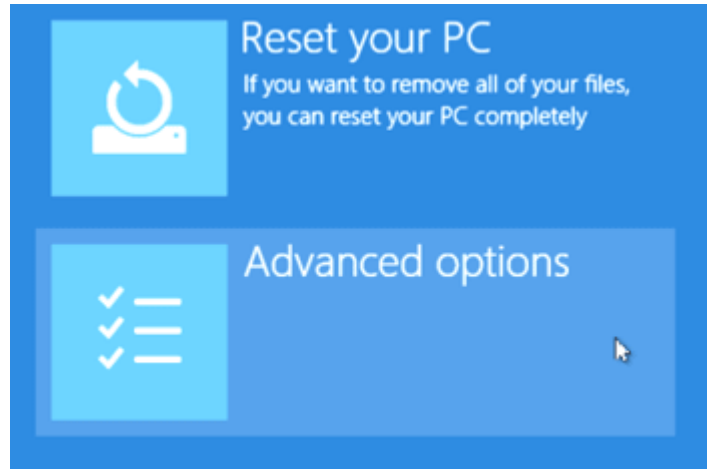
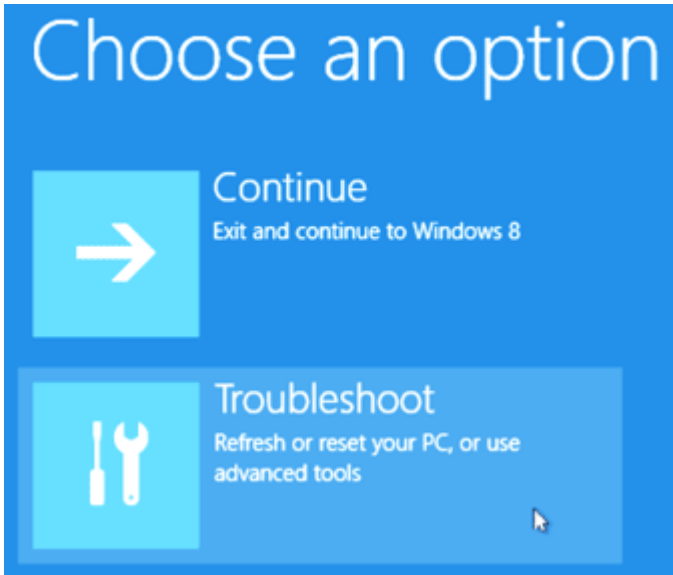
Perform these steps before installing software

1) Turn on the computer and go to the desktop. Press **Ctrl + Alt + Delete** on your keyboard.

Click the **Power Icon**  at the bottom right and then **Shift + Click** the **Restart** button.

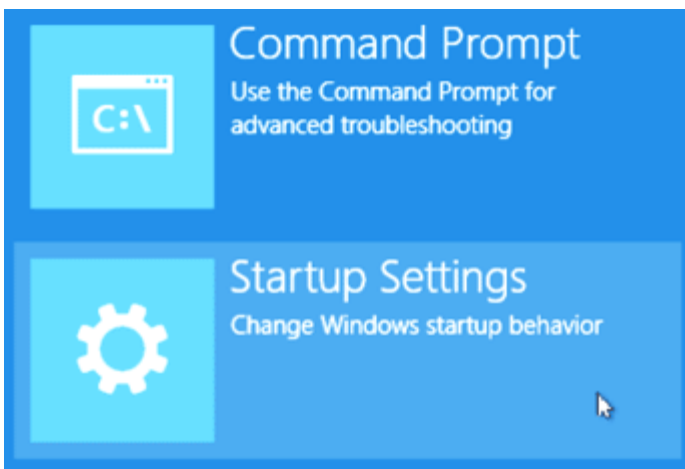
2) On the next blue screen “Choose an option”, click **Troubleshoot**

3) Then click **Advanced Options**



4) Then click **Startup Settings**

5) On the Startup Settings press F7 or 7 on your keyboard.



And then click **Restart**



Now install and configure the software and drivers.