

Clamping Chevy Keys with 3D Pro Key Machine in Jaw 2: DSD 26

Chevy Astro Van 2000-2005

Chevy Avalanche 2002-2006

Chevy Blazer 2000-2005

Chevy Blazer 1995-1998

Chevy Cavalier 2000-2005

Chevy Corvette 2000-2004

Chevy Equinox 2005-2006

Chevy Express Van 2000-2007

Chevy Uplander 2005-2008

Chevy Impala 2000-2005

Chevy Malibu 2000-2004

Chevy Monte Carlo 2000-2005

Chevy Silverado 1995-2007

Chevy SSR 2003-2006

Chevy Suburban 1995-2006

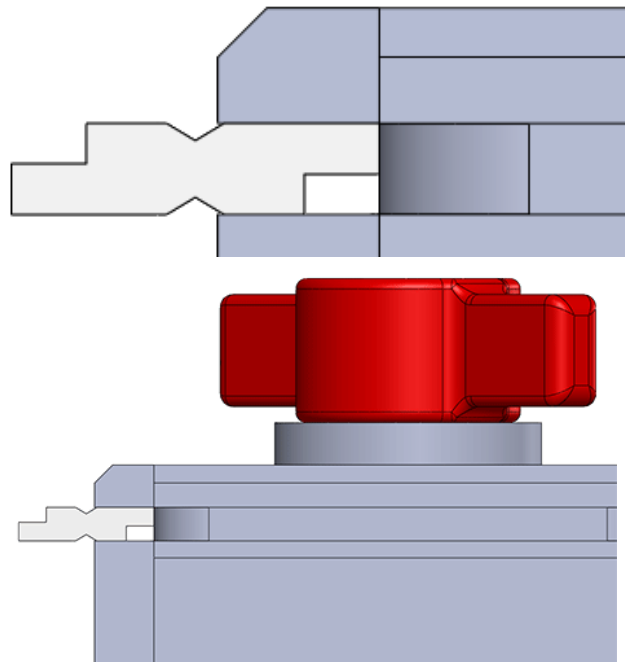
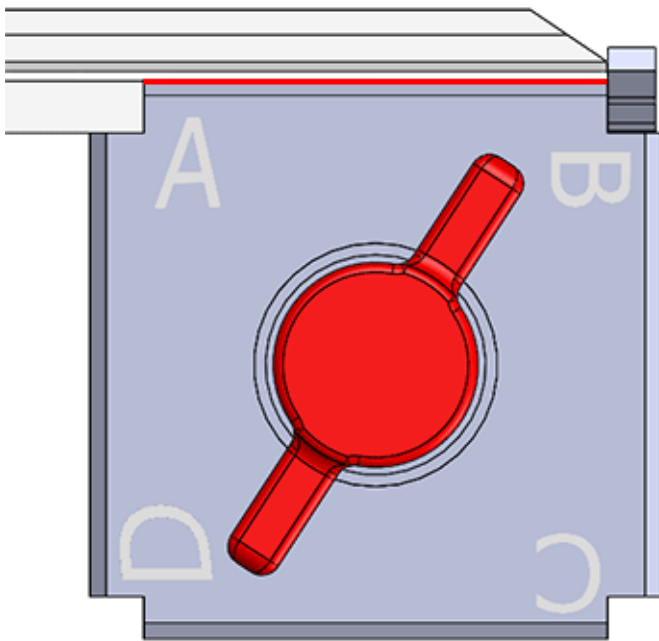
Chevy Tahoe 1995-2006

Chevy Trailblazer 2002-2008

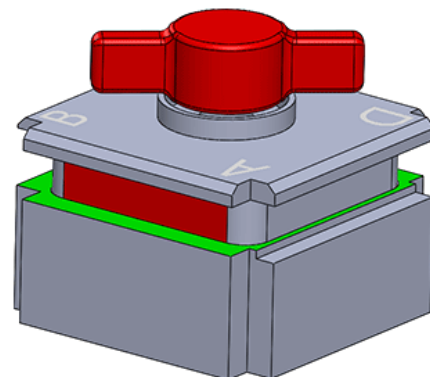
Chevy Venture 1997-2005

Code series: AA00-7T51, S000A-S711K, 001-2000

Key Blanks: Original GM 322177 597749 599478, ILCO P1102-B82 B85 B86 B89 B91 B92 B97 B102, JMA GM-25 GM-25P GM-41



Make sure the key is sitting all the way to the **back of the Jaw 2** as shown in red. Shown in green is where the Jaw 2 should bite the key.



Clamping Chevy Keys with 3D Pro Key Machine in Jaw 2: DSD 141 and 260

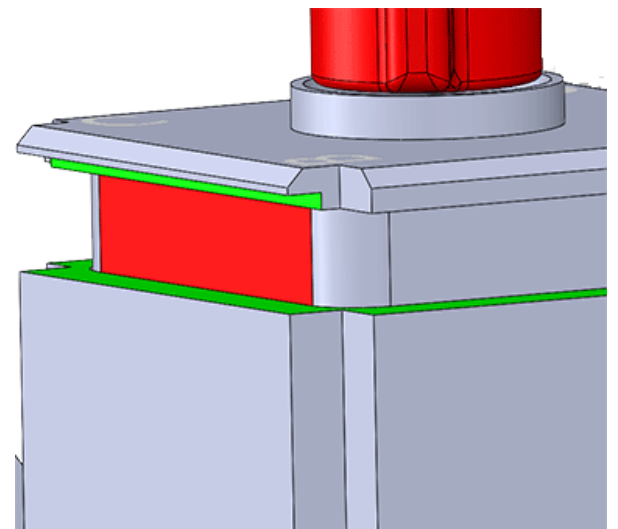
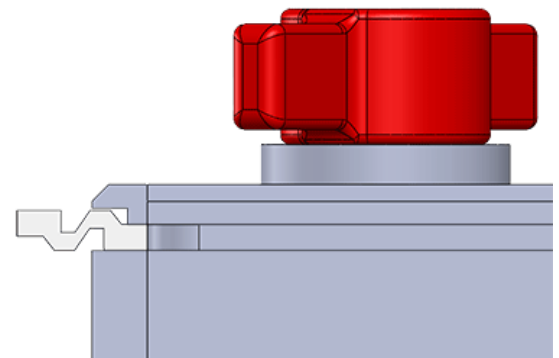
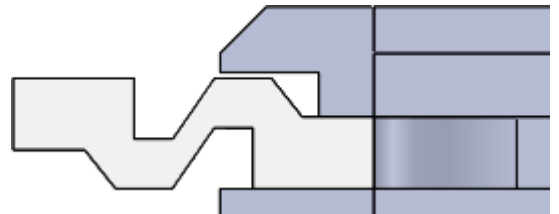
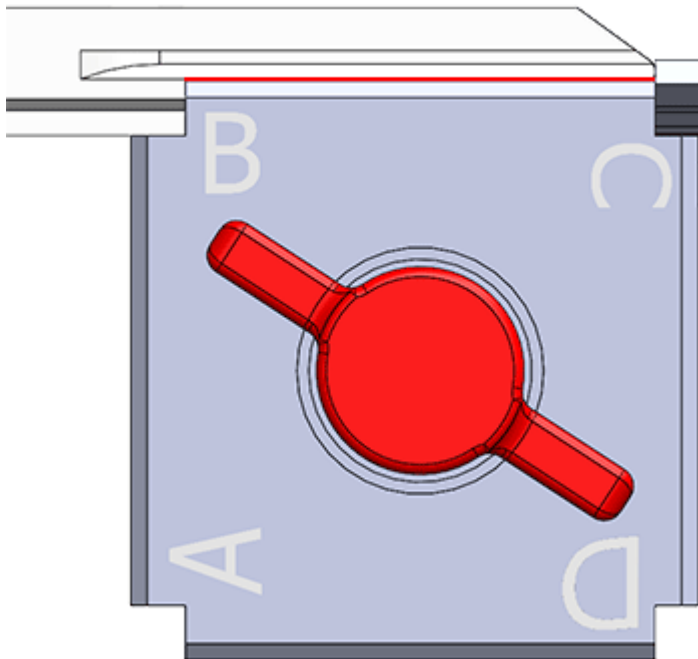
Chevy Classic 2004 +
Chevy Cobalt 2005 – 2010
Chevy Corvette 2005 +
Chevy HHR 2006 – 2011
Chevy Uplander 2005 - 2008
Chevy Silverado 2007 - 2012
Chevy Equinox 2007 - 2009

Chevy Impala 2005 – 2013
Chevy Malibu 2004 – 2012
Chevy Monte Carlo 2005 – 2007
Chevy Tahoe 2007 - 2012
Chevy Suburban 2007 - 2012
Chevy Traverse 2009 - 2012
Chevy Express Van 2008 - 2012

Various Cadillac, GMC, Saturn and
Pontiac 2003 – 2013

Code series: G 0000 – G3631

Key Blanks: Original 599487, Ilco B106 or B111-PT, Silca B111-PT



Make sure the key is sitting all the way to the **back of the Jaw 2** as shown in red. Shown in green is where the Jaw 2 should bite the key.

Clamping Chevy Keys with 3D Pro Key Machine in Jaw 2: DSD 301

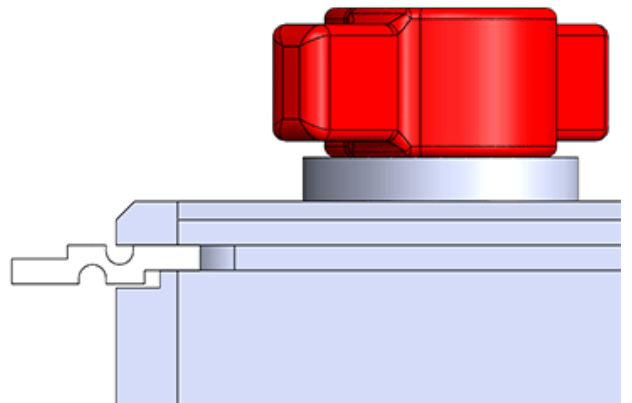
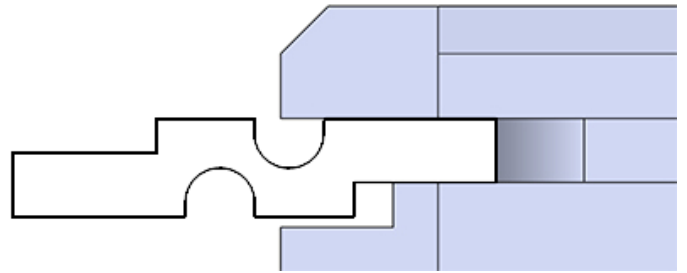
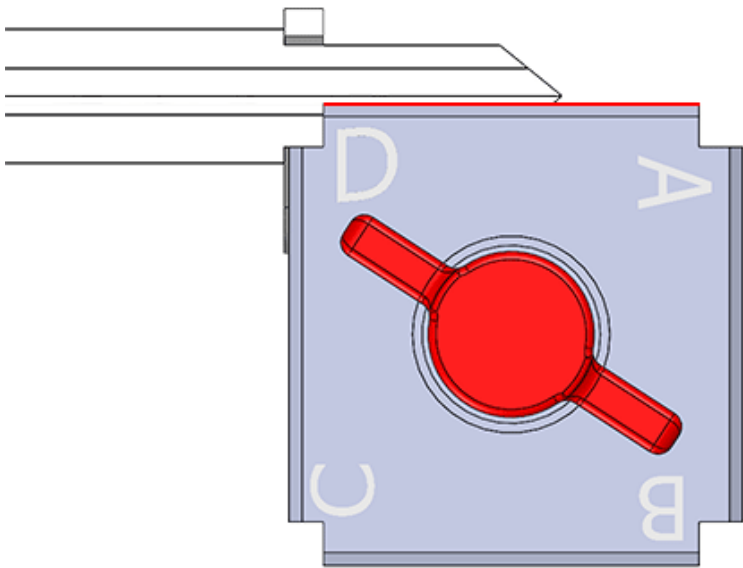
Chevy Aveo 2002 – 2011
Chevy Captiva Sport 2011 - 2012

Chevy Sonic 2001 – 2011
Chevy Spark 2010 +

Code series V2000 – 3200

Key Blanks: Original 96628232, Ilco / Silca DWO4RAP, JMA DAE-3P2 or DAE-4P1

Loosen the red Jaw 2 knob and turn the D side of the Jaw 2 facing the back of the machine toward the cutter wheel. Clamp using the Shoulder Stop and make to the place the key all the way to the back of the Jaw 2.



Make sure the key is sitting all the way to the **back of the Jaw 2** as shown in red. Shown in green is where the Jaw 2 should bite the key.

